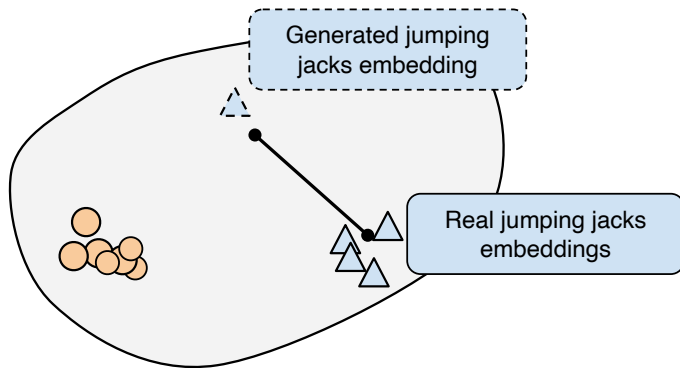


Metrics - How to evaluate the **realism** of a generated video?

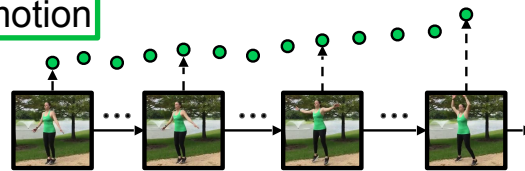
Is the action
semantically correct?



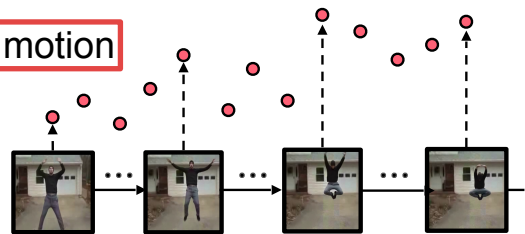
Action Consistency = Distance of generated video embedding to centroid of real video embeddings

Is the motion
temporally coherent?

Coherent motion



Incoherent motion



Trajectory of per-frame embeddings

Temporal Coherence =
Mean distance between adjacent frame embeddings